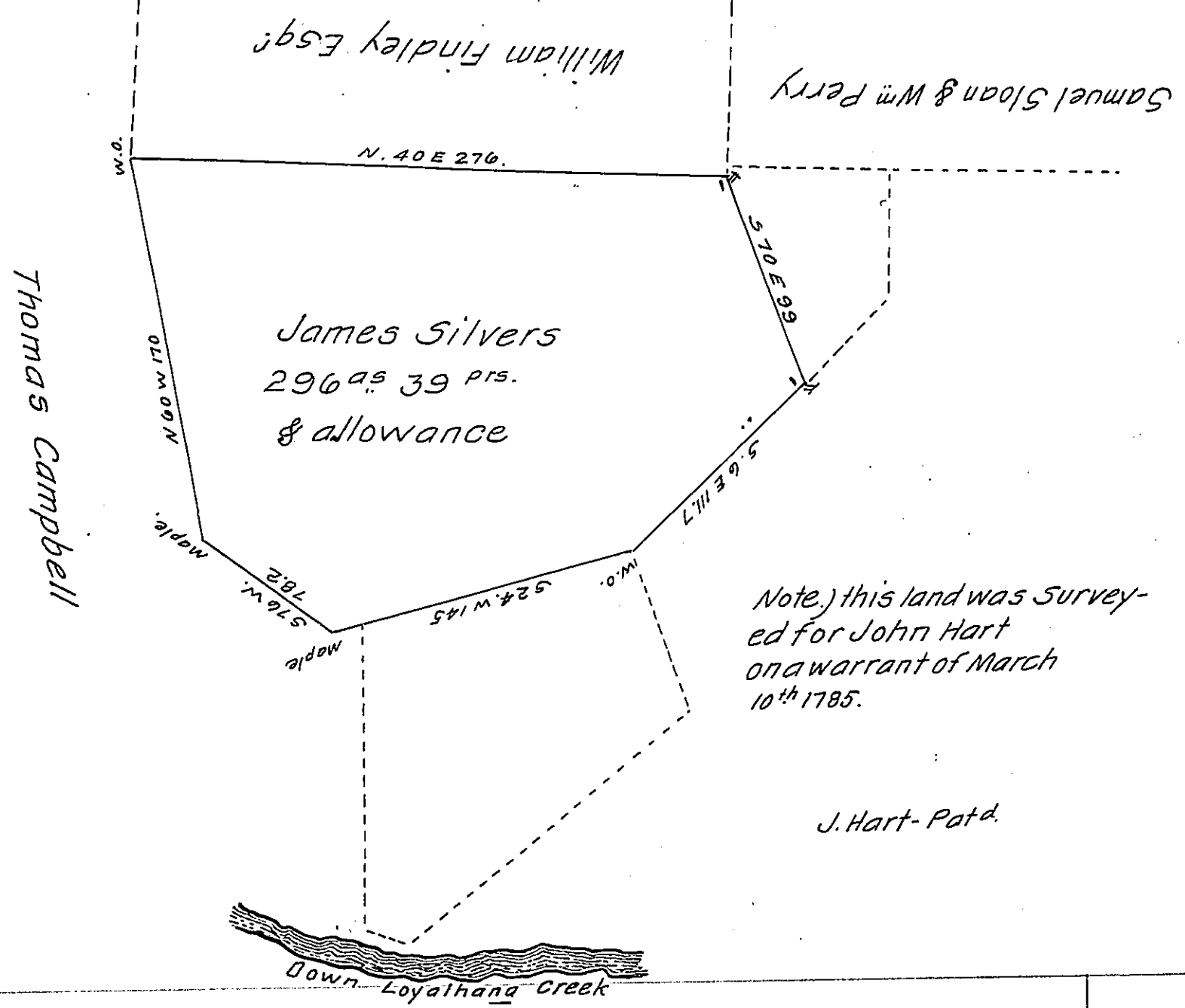


FORM No 1.



In pursuance of an Application granted to James Silvers No 2539. dated 3<sup>d</sup> of April 1769. Surveyed on the 24<sup>th</sup> of March 1829 the above <sup>ninety six</sup> ~~sixty nine~~ acres described tract of land Containing two hundred and ~~sixty nine~~ <sup>ninety six</sup> acres thirty nine perches and the allowance proportioned at Six per cent for Roads &c. Situate on Loyalhana Creek in Salem Township Westmoreland County Penn.

Gabriel Hiester Esq<sup>r</sup> } S. L. Carpenter D. S.  
 Surveyor General of Pen. }

IN TESTIMONY that the above is a copy of the original remaining on file in the Department of Internal Affairs of Pennsylvania, made conformably to an Act of Assembly approved the 16th day of February, 1833, I have hereunto set my Hand and caused the Seal of said Department to be affixed at Harrisburg, this eighth day of March 1909.

*Henry Horner*  
 Secretary of Internal Affairs.